



Stonehill Engineering
22 Stonehill
Huntingdon
Cambridgeshire
PE29 6DR

www.stonehillengineering.com
sales@stonehillengineering.com
+44 (0)1480 435302

A division of Encocam Ltd

Welcome to Stonehill Engineering

“Stonehill Engineering (SHE) is a business with more than 37 years’ experience in manufacturing and engineering.

Operating globally, our continual investment in the latest plant technology and machinery has been a determining factor in our steady growth and continued impressive sales, backed by a commitment to achieving the highest standard of quality, both during and after production.

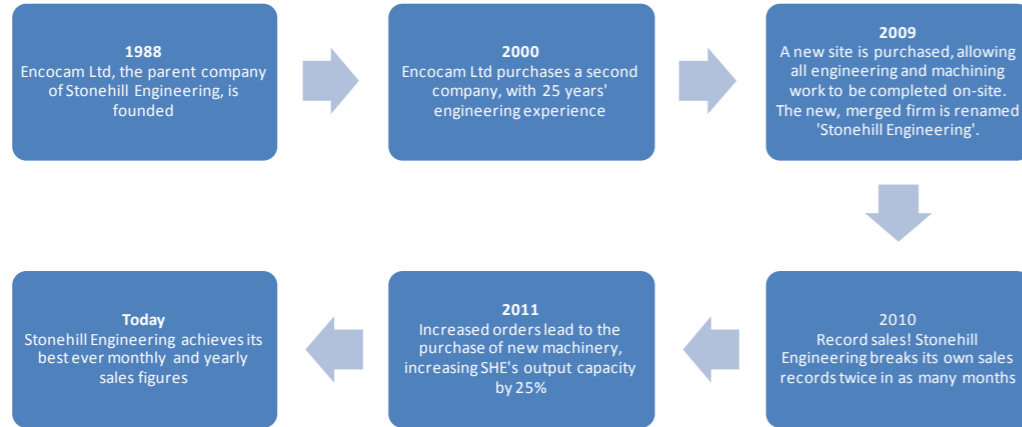
Our staff are dedicated to providing a personal service that customers can return to time and time again, with confidence in the consistently high quality and benefits of our products.

Whatever your specification, we can help you meet your engineering project’s requirements and deadlines.”

Mike Ashmead
Managing Director



More than 37 years' experience
in the manufacturing industry



Expertise and Quality

Stonehill Engineering has a policy of **continuous improvement and innovation**, and total commitment to customer satisfaction.

The **experienced and dedicated** SHE team has all the plant and equipment necessary to produce high-quality, ultra-accurate components and assemblies.

SHE caters for many industries, as shown by its **diverse product showcase**, and is committed to meeting the needs of its customers around the world.

Quality customer service is a key commitment for SHE. The company believes strongly in continuous improvement and adheres to stringent quality checks at all stages of the production process.

Through its experienced in-house despatch team and dedicated company vehicles, Stonehill Engineering provides a **secure and reliable** delivery process. It also works directly with a toolmaker in China to offer value-for-money injection mould tools and mouldings, made to the high standard of **quality** expected in the UK.

The Stonehill Engineering team are proud to offer a **global service**, delivering to customers all over the world from two main sites in Cambridgeshire, UK.

More than 97.5% of orders delivered on time (2010/11)



Development & Production

Tailored Design Service

Stonehill Engineering's design service is tailored to individual project requirements, meaning clients only pay for the services they receive. Clients can opt for single or multiple stages of a complete production process.

These stages include;

- Initial consultation
- 2D drawing of components for future reference
- 3D model production for manufacture
- Component manufacturing



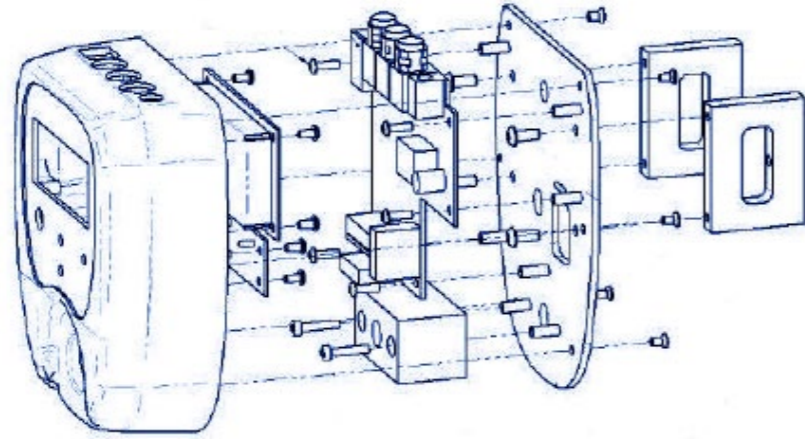
For a complete list of services and production equipment, please refer to the back cover of this leaflet, or the SHE website.

Bespoke & Custom Parts

A skilled in-house design department at SHE creates, designs and alters bespoke components for clients. 3D-CAD technology, compatible with all the latest process-flow software, is used to compose accurate engineering drawings.

These can then be developed to produce computer visual models and solid models. The end result is a fully bespoke and accurate manufacturing process, from start to finish.

A full development and production service,
completed by skilled design and manufacture professionals...



... to create sophisticated tools and components, such as this laser speed device. A full case study is available on the SHE website.

Machining & More

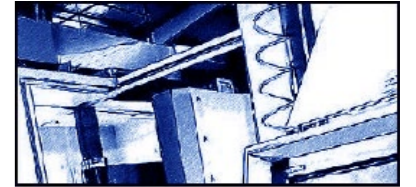
Stonehill Engineering has a commitment in the investment of new machinery, which has resulted in a large and varied manufacturing capability. Both 2D and 3D component forms are used to accurately proceed through the various production avenues, ensuring that parts are manufactured and delivered to a consistently high quality; on time, every time.

CNC Machining

Stonehill Engineering's machining capacity is largely based around CNC machining with work undertaken in both milling and turning fields. Several CNC machines are available, comprising cutting-edge technologies and techniques to offer a fast, efficient and accurate service as standard.

Conventional Machining

SHE carries out many aspects of conventional machining, from turning and grinding to milling and drilling. A full description of all services and machinery is available on the production equipment datasheet. All machining services are completed on-site, using a modern, fully-fitted workshop, and professional, fully-trained staff are employed to ensure that all output follows the company's stringent quality processes.



Investment in new machinery, such as this CNC lathe, ensures the highest quality output, and a faster, more efficient process.

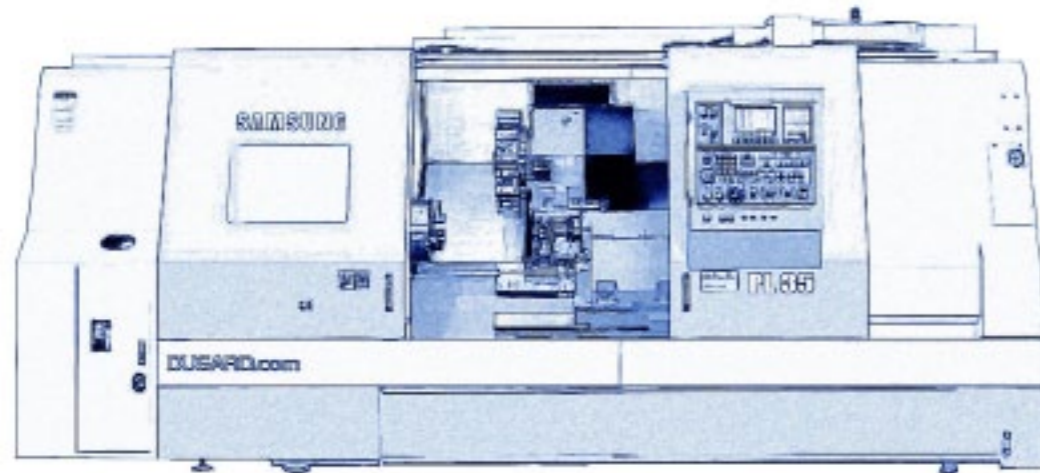
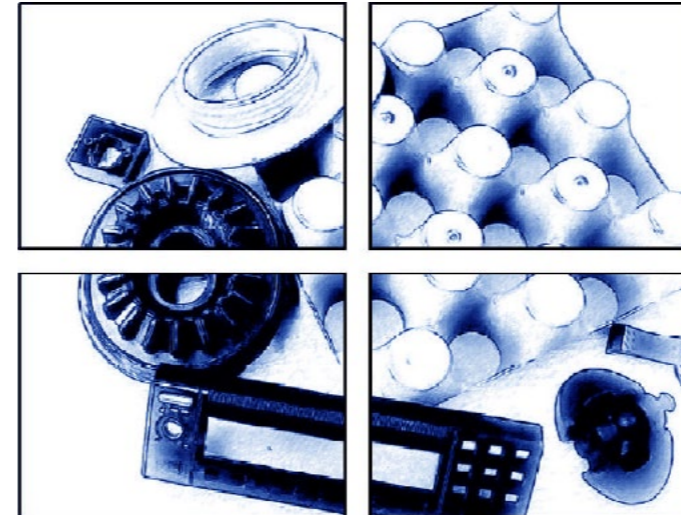


Photo supplied by Dugard.com

Injection Moulding

SHE specialises in low to mid-volume injection moulding, and utilises various materials. Its plastic injection moulding machines range from 22-250 tonnes' clamping force with an approximate shot capacity of 2-800 grams part weight. Many types of assembly work and finishing processes on moulded components can also be completed, and an impressive range of on-site equipment and technology allows optimum flexibility and versatility on all customer orders.



Toolmaking

Stonehill Engineering offers a complete component production process to turn concepts into 3D models or parts for production. This in turn can be followed on by a prototyping or prototype moulding service. The company has built up a strong relationship with a low cost and high quality Chinese toolmaker, offering value-for-money injection mould tools and mouldings. The entire manufacturing process is managed by an experienced engineering team to ensure customer satisfaction from enquiry to completion.

Welding & Fabrication

Welding and fabrication services are available on-site; sheet metal work and MIG and TIG welding can be completed using a variety of metals. Many larger projects are also commissioned on a bespoke basis.

Highly-skilled technical and administration staff
situated across two sites in Cambridgeshire...



...working to turn client concepts into reality.

“Continuous Improvement” : The Future of Stonehill Engineering

Stonehill Engineering is proud to be part of Encocam Ltd, a group of highly dynamic, forward-thinking companies.

Encocam is certified through BSi to ISO 9001:2008, and is in the process of achieving BS EN 9100:2009 for SHE and another division.

Clients of the group are based worldwide, and include energy absorption, safety testing and manufacturing and engineering fields, as well as a range of other industries.

Aerospace, defense, rail and automotive markets are projected to be key areas of development and growth in the future of Stonehill Engineering.

With a large and varied plant, frequently updated to include top-of-the-range machinery and equipment, SHE has the capacity to meet the criteria for many new and emerging market requirements. Most recently, the plant has been expanded to include a CNC centre lathe, providing extra production capacity and enabling a faster and more efficient method of manufacturing.

To discuss your project in more detail, contact Stonehill Engineering on (01480) 435302.

Capabilities: Production Equipment

Other bespoke services may be available upon request

CNC Machining Centres

- Deckel Maho DMF 220
Working area (mm): 2200 x 600 x 600
- Micron VCE1600
with 4th axis capability
Working area (mm): 1600 x 900 x 800
- Deckel Maho DMC103V
Working area (mm): 1000 x 600 x 600
- Micron VCE600
Working area (mm): 600 x 500 x 500
- Micron VCE800
with 4th axis capability
Working area (mm): 800 x 500 x 500

Injection Moulding

- Arburg 50-Tonne
Distance between tie bars (mm): 270 x 270
Mould height (mm): 200 to 550
- Arburg 250-Tonne
Distance between tie bars (mm): 630 x 630
Mould height (mm): 300 to 700

Stonehill Engineering

Enterprise House
22 Stonehill
Huntingdon
Cambridgeshire
PE29 6DR

CNC Turning

- CNC Centre Lathe
Maximum work piece 150mm diameter
- CNC Slant Bed Turning Centre
Samsung PL-35 1500. 12" chuck,
Max turning diameter 420mm
Max turning length 1530mm
- CNC Slant Bed Turning Centre
Dugard Eagle 100
Max turning diameter 138mm
Max turning length 290mm

Welding & Fabrication

- Welding MIG / TIG
Steel, stainless steel and aluminium
- Basic Sheet Metalwork
Steel, stainless steel and aluminium

CNC Router

Working area (mm): 4300 x 2100

Manual Milling

Manual Turning

www.stonehillengineering.com
sales@stonehillengineering.com
+44 (0)1480 435302

Spark Eroders

Working area (mm): 400 x 250

Surface Grinding/ Lining

- Okamoto surface grinder
Working area (mm): 600 x 300 x 300
- GrindMaster 900 liner
Working width (mm): 900

Water Jet Capability

Thickness on application:
Working area (mm): Up to 3000 x 2000

Inspection

- Fusion FAROArm
6ft reach; 7 Axis

Sub-processes / Finishing

- Anodising
- Plating
- Powder Coating
- Wet Painting
- Polishing
- Bead/Sand Blasting
- Rumbling

Delivering Engineering Success